

NEXT GENERATION ARTIFICIAL INTELLIGENCE

MITRE's Federal AI Sandbox will drive next-generation artificial intelligence (AI)-enabled applications for the federal government, accelerated by an NVIDIA DGX SuperPOD.™

Pioneering the Future of Artificial Intelligence

MITRE, in partnership with NVIDIA, will advance and accelerate AI research and development for government applications by introducing its innovative Federal AI Sandbox. Powered by the state-of-the-art NVIDIA DGX SuperPOD™, this \$20 million supercomputer is poised to enhance AI capabilities across the U.S. federal government, providing unparalleled computing power and expertise.

Launching in Ashburn, Virginia, the Sandbox will serve as a secure environment for federal agencies to experiment, prototype, and deploy advanced AI solutions. With access to an NVIDIA DGX SuperPOD™ with 248 H100 GPUs and supported by VAST Data's storage technology, the Sandbox is designed to train large language models and tackle government-specific AI tasks, such as enhancing, securing infrastructure and reducing fraud.

Revolutionizing Government Efficiency

MITRE's Sandbox advances consequential uses of AI across numerous fields, including national security, healthcare, transportation, and climate. By providing U.S. government agencies with the expertise and opportunity to tap into supercomputing capabilities, the Sandbox levels the playing field, enabling the training and testing of custom AI solutions. This initiative aligns with [the AI executive order to maintain the U.S. as a global AI leader](#), enhancing services and addressing major challenges.



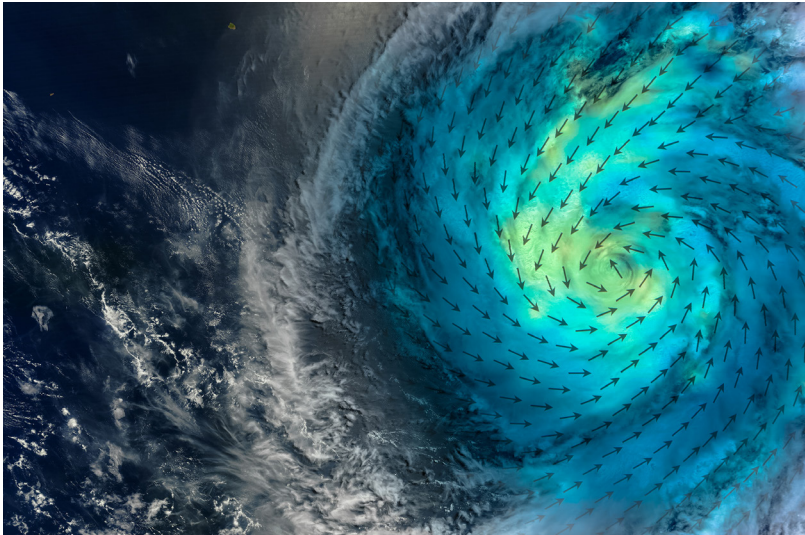
AI has immense potential to transform government's service to its citizens. The Federal AI Sandbox will harness AI for everything from improving resilience of critical infrastructure to making Medicare sustainable.

Charles Clancy, Senior Vice President and General Manager, MITRE Labs, and Chief Technology Officer, MITRE



About the Sandbox

- **Location:** Ashburn, VA
- **Launch Date:** Q4 2024
- **Technology:** Equipped with 248 NVIDIA H100 GPUs
- **Purpose:** To enhance AI research and development with increased computing power and train large language models for government-specific AI tasks.
- **Name:** Judy, honoring the pioneering spirit and groundbreaking contributions of Judy Clapp, a trailblazer in computer science and engineering.



Cutting-Edge Technology

The Sandbox boasts an exaFLOP of 8-bit AI compute performance, capable of performing a quintillion math operations per second. This immense computational power supports the development of AI tools, including generative AI, multimodal perception systems, and reinforcement learning decision aids. The Sandbox will also host managed AI services, simplifying experimentation at the AI frontier. It is also designed to implement best practices for AI training.

Join the AI Revolution

All federal sponsors of MITRE will have access to this transformative platform. Interested parties are invited to collaborate and explore how AI can solve complex governmental issues. The planned operationalization of the Sandbox in the fourth quarter of 2024 will focus on training new foundational models and hosting AI services, with an upgrade to advanced cybersecurity maturity model level 2 planned for 2025.

Initial use cases include:

- Improving high-resolution weather modeling and hazard planning
- Simplifying government systems for providing benefits and services
- Helping cybersecurity experts defend critical infrastructure

Shape the Future with Us

This initiative will turbocharge the U.S. federal government's AI efforts, driving innovation and efficiency across the federal landscape. Join us in this exciting opportunity to redefine AI capabilities and transform government efficiency, adeptly processing diverse data and improving decision-making capabilities to pioneer the future of AI innovation. NVIDIA, in partnership with MITRE, will provide periodic training and workshops. The Sandbox includes licensing for NVIDIA's full AI software suite, featuring 450+ domain-specific SDKs.

For more information and to get involved, please contact MITRE's AI initiative team at AI@mitre.org. Together, we can shape the future of AI and unlock its incredible potential for federal missions.

“

The Federal AI Sandbox offers a secure and dynamic space for experimenting with and deploying advanced solutions customized to specific needs, poised to transform the way government agencies utilize AI.

[Deborah Youmans](#), Vice President,
Chief Information Officer, MITRE

”

MITRE's mission-driven teams are dedicated to solving problems for a safer world. Through our public-private partnerships and federally funded R&D centers, we work across government and in partnership with industry to tackle challenges to the safety, stability, and well-being of our nation.

MITRE | SOLVING PROBLEMS
FOR A SAFER WORLD™